

41-30

PART OF A PLANNED UNIT DEVELOPMENT KINGS POINT PLAT NO. FOUR

A PART OF THE S E 1/4 OF
SECTION 23, TOWNSHIP 46 SOUTH,
RANGE 42 EAST, PALM BEACH
COUNTY, FLORIDA

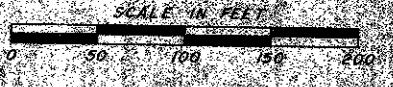
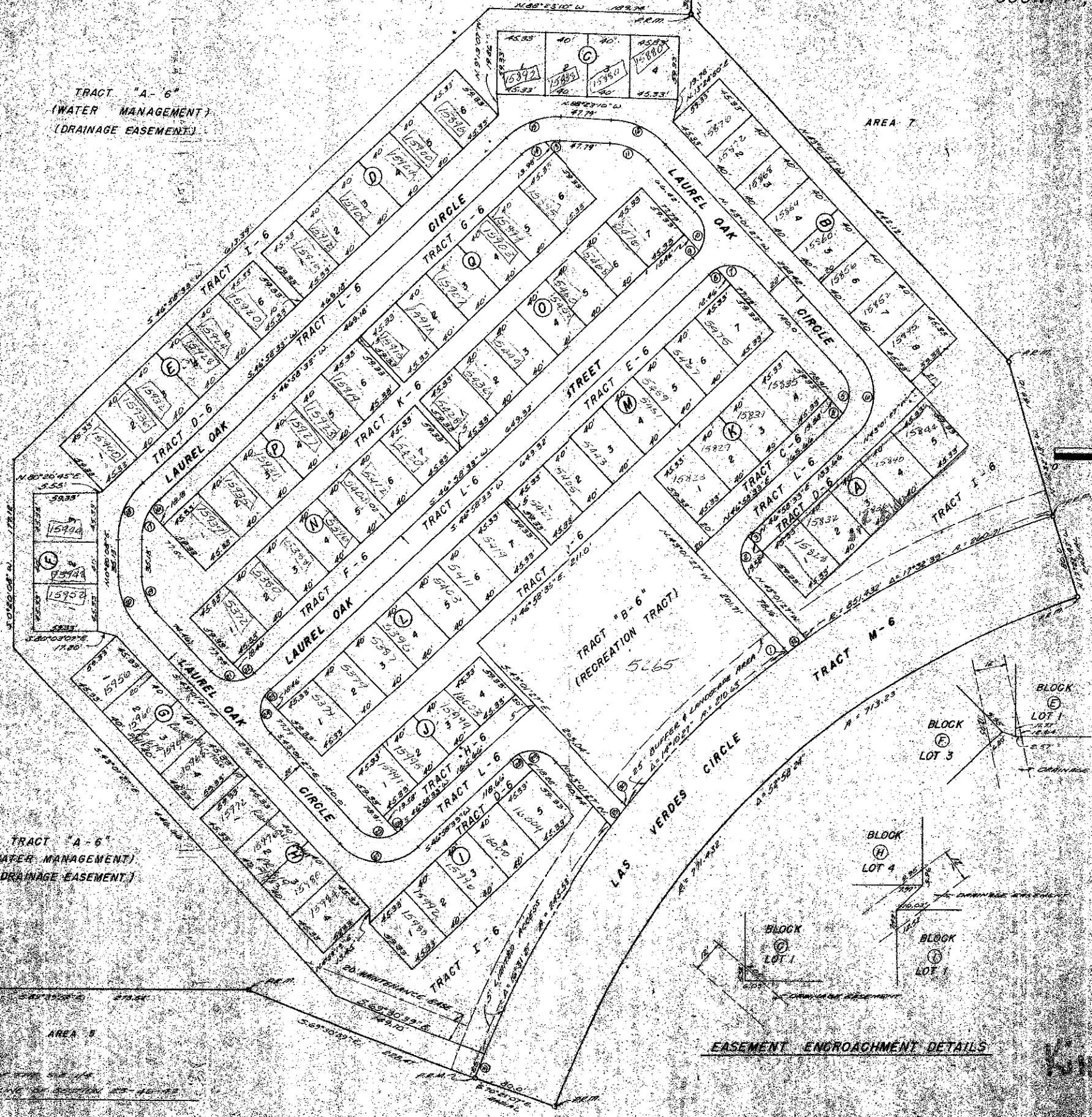
30

TRACT "A-6"
(WATER MANAGEMENT)
(DRAINAGE EASEMENT)

TRACT "A-6"
(WATER MANAGEMENT)
(DRAINAGE EASEMENT)

AREA B

AREA 7



CURVE NO.	RADIUS	CHORD	ARC LENGTH	AREA
1	100	100	100	15708
2	100	100	100	15708
3	100	100	100	15708
4	100	100	100	15708
5	100	100	100	15708
6	100	100	100	15708
7	100	100	100	15708
8	100	100	100	15708
9	100	100	100	15708
10	100	100	100	15708
11	100	100	100	15708
12	100	100	100	15708
13	100	100	100	15708
14	100	100	100	15708
15	100	100	100	15708
16	100	100	100	15708
17	100	100	100	15708
18	100	100	100	15708
19	100	100	100	15708
20	100	100	100	15708
21	100	100	100	15708
22	100	100	100	15708
23	100	100	100	15708
24	100	100	100	15708
25	100	100	100	15708
26	100	100	100	15708
27	100	100	100	15708
28	100	100	100	15708
29	100	100	100	15708
30	100	100	100	15708
31	100	100	100	15708
32	100	100	100	15708
33	100	100	100	15708
34	100	100	100	15708
35	100	100	100	15708
36	100	100	100	15708
37	100	100	100	15708
38	100	100	100	15708
39	100	100	100	15708
40	100	100	100	15708
41	100	100	100	15708
42	100	100	100	15708
43	100	100	100	15708
44	100	100	100	15708
45	100	100	100	15708
46	100	100	100	15708
47	100	100	100	15708
48	100	100	100	15708
49	100	100	100	15708
50	100	100	100	15708
51	100	100	100	15708
52	100	100	100	15708
53	100	100	100	15708
54	100	100	100	15708
55	100	100	100	15708
56	100	100	100	15708
57	100	100	100	15708
58	100	100	100	15708
59	100	100	100	15708
60	100	100	100	15708
61	100	100	100	15708
62	100	100	100	15708
63	100	100	100	15708
64	100	100	100	15708
65	100	100	100	15708
66	100	100	100	15708
67	100	100	100	15708
68	100	100	100	15708
69	100	100	100	15708
70	100	100	100	15708
71	100	100	100	15708
72	100	100	100	15708
73	100	100	100	15708
74	100	100	100	15708
75	100	100	100	15708
76	100	100	100	15708
77	100	100	100	15708
78	100	100	100	15708
79	100	100	100	15708
80	100	100	100	15708
81	100	100	100	15708
82	100	100	100	15708
83	100	100	100	15708
84	100	100	100	15708
85	100	100	100	15708
86	100	100	100	15708
87	100	100	100	15708
88	100	100	100	15708
89	100	100	100	15708
90	100	100	100	15708
91	100	100	100	15708
92	100	100	100	15708
93	100	100	100	15708
94	100	100	100	15708
95	100	100	100	15708
96	100	100	100	15708
97	100	100	100	15708
98	100	100	100	15708
99	100	100	100	15708
100	100	100	100	15708

EASEMENT ENCROACHMENT DETAILS

0263-002

PREPARED BY
BRETT CULPEPPER, P.E.
C.F.S. and ASSOCIATES, INC.
CONSULTING ENGINEERS
KINGS POINT #4 41/30
SHEET 2 OF 25